



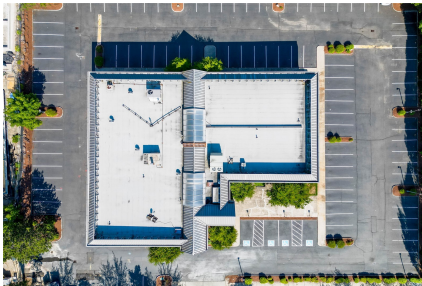
# Active Kirkland | \$20,500,000

SEE BELOW for digital options you can share with your clients.



13030 121st Wy NE, Kirkland, WA 98034 | MLS #2133775

0 Bedrooms | 0 Bathrooms | 62,489 SF Home



---

This investment opportunity won't last long. This well managed, 2-story medical building is located in the heart of Totem Lake, Kirkland, next to Evergreen Hospital. Evergreen Hospital's Emergency facilities are directly across the street! 100% occupied by long-term tenants provides security on your investment with this property.

---

DIGITAL  
BROCHURE

3D & VR  
TOUR

VIRTUAL  
TOUR

MLS  
LISTING





44 NWMLS



44 NWMLS







**Victoria Baptiste**

Broker  
425-949-9993  
Victoria@BaptisteRealty.com

**WeLakeside**  
REAL ESTATE



Information from reliable sources but not guaranteed. Buyer to verify.

**Share this email:**



800 Bellevue Way, Suite 500  
Bellevue, WA | 98004 United States

**[Unsubscribe this maillist](#)**