



PURCHASED

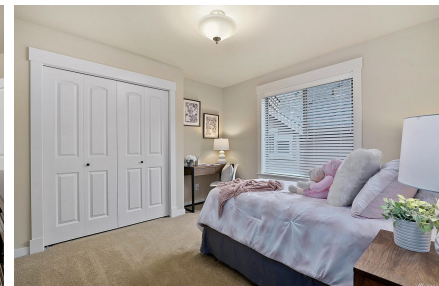
Sammamish | \$2,143,000

SEE BELOW for digital options you can share with your clients.



2871 258th Place SE, Sammamish, WA 98075 | MLS #1904388

4 Bedrooms | 2.75 Bathrooms | 2,688 SF Home



Built in the desirable Woods At Beaver Lake neighborhood, this Burnstead resale welcomes you to an unforgettable experience of comfort, elegance, and privacy all in one. Backed up against a private greenbelt, this meticulously maintained home with upgrades features rich elements, a warm atmosphere for intimate or large gatherings, and ample storage throughout. Open main floor kitchen/living/dining room concept with access to the private backyard with an extended patio. Main floor bedroom or office space, perfect for working from home. Opulent five-piece primary suite with territorial views. Easy access to parks,

schools, shopping/restaurants, Beaver Lake, and freeways. Located in the award winning Issaquah School District

DIGITAL
BROCHURE

3D & VR
TOUR

VIRTUAL
TOUR

MLS
LISTING













Yujing Sun

Broker
206-819-6067
yujing.sun09@gmail.com

WeLakeside
REAL ESTATE



Information from reliable sources but not guaranteed. Buyer to verify.

Share this email:



800 Bellevue Way, Suite 500
Bellevue, WA | 98004 United States

[Unsubscribe this maillist](#)