



JUST LISTED

Bellevue | \$2,180,000

SEE BELOW for digital options you can share with your clients.



6119 139th Place SE, Bellevue, WA 98006 | MLS #1877810

4 Bedrooms | 3 Bathrooms | 3,810 SF Home



You can hardly find a mature high-end community in Bellevue. Close to downtown Bellevue, Bellevue College and Microsoft. Convenient commute to I-5 and I-90. Plenty shopping and restaurants at Factoria mall. Great Bellevue top schools. Traditional & Elegant sought-after Amherst. Rare large floor plan, 2-story w/900+ sq ft lower-level entertainment/guest area. 4

generous sized bedrooms, lavish 5-piece master/w heated tile flrs & marble counters. Formal Living & Dining, 3 fireplaces, Gourmet kitchen w/granite, SS appliances & Decor, gas cooktop. Office on main. Year 2013 new 50-yr roof. Tucked away in a cul-de-sac on a 1/4+ acre lot. Fresh painted exterior. Fenced and backing into a green belt w/gate that literally opens to miles of trails.

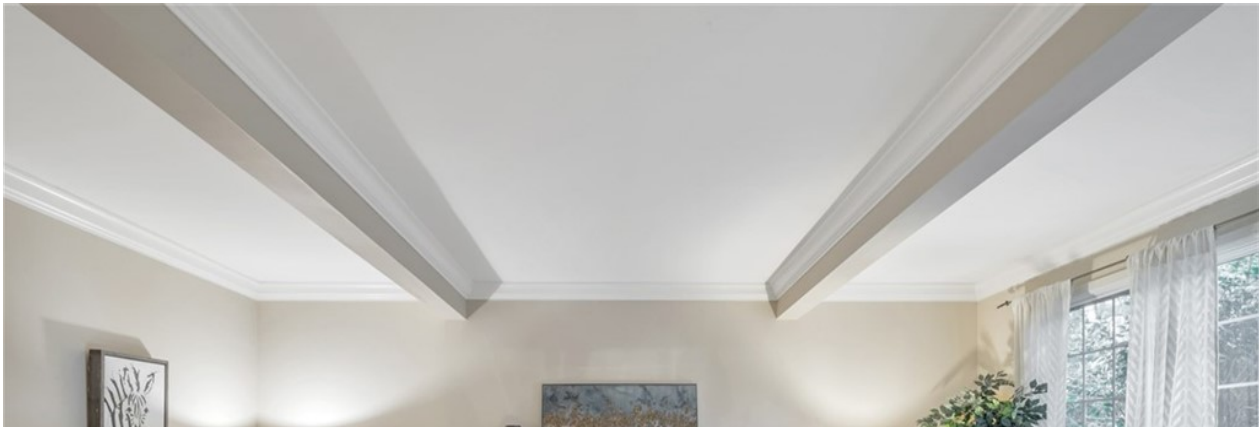
DIGITAL
BROCHURE

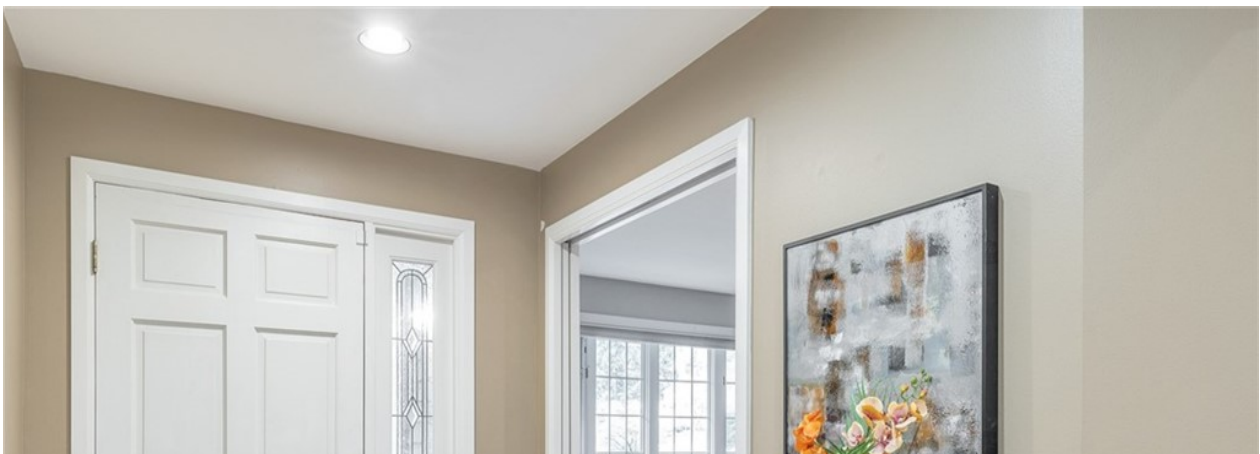
3D & VR
TOUR

VIRTUAL
TOUR

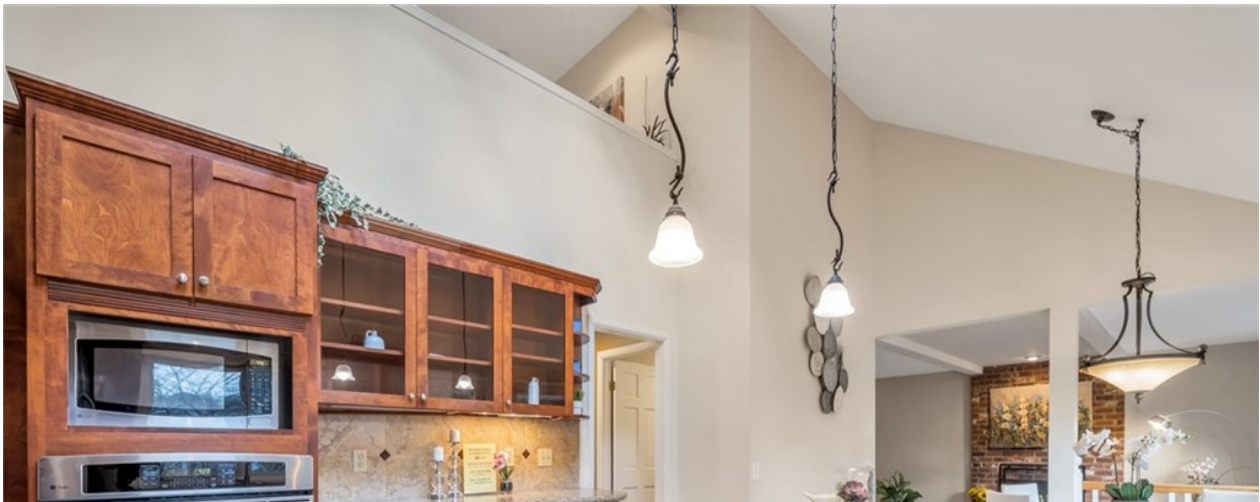
MLS
LISTING



















Wei Younts

Broker
253-670-0275
weiyounts@gmail.com

WeLakeside
REAL ESTATE



Information from reliable sources but not guaranteed. Buyer to verify.

Share this email:



800 Bellevue Way, Suite 500
Bellevue, WA | 98004 United States

[Unsubscribe this maillist](#)